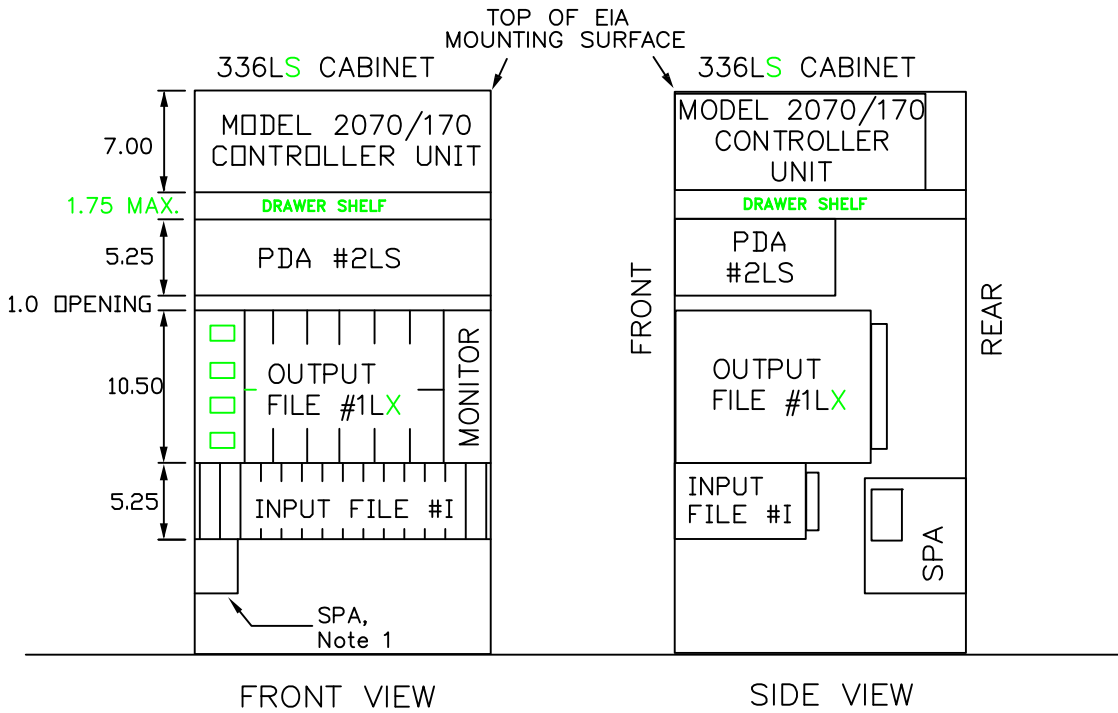
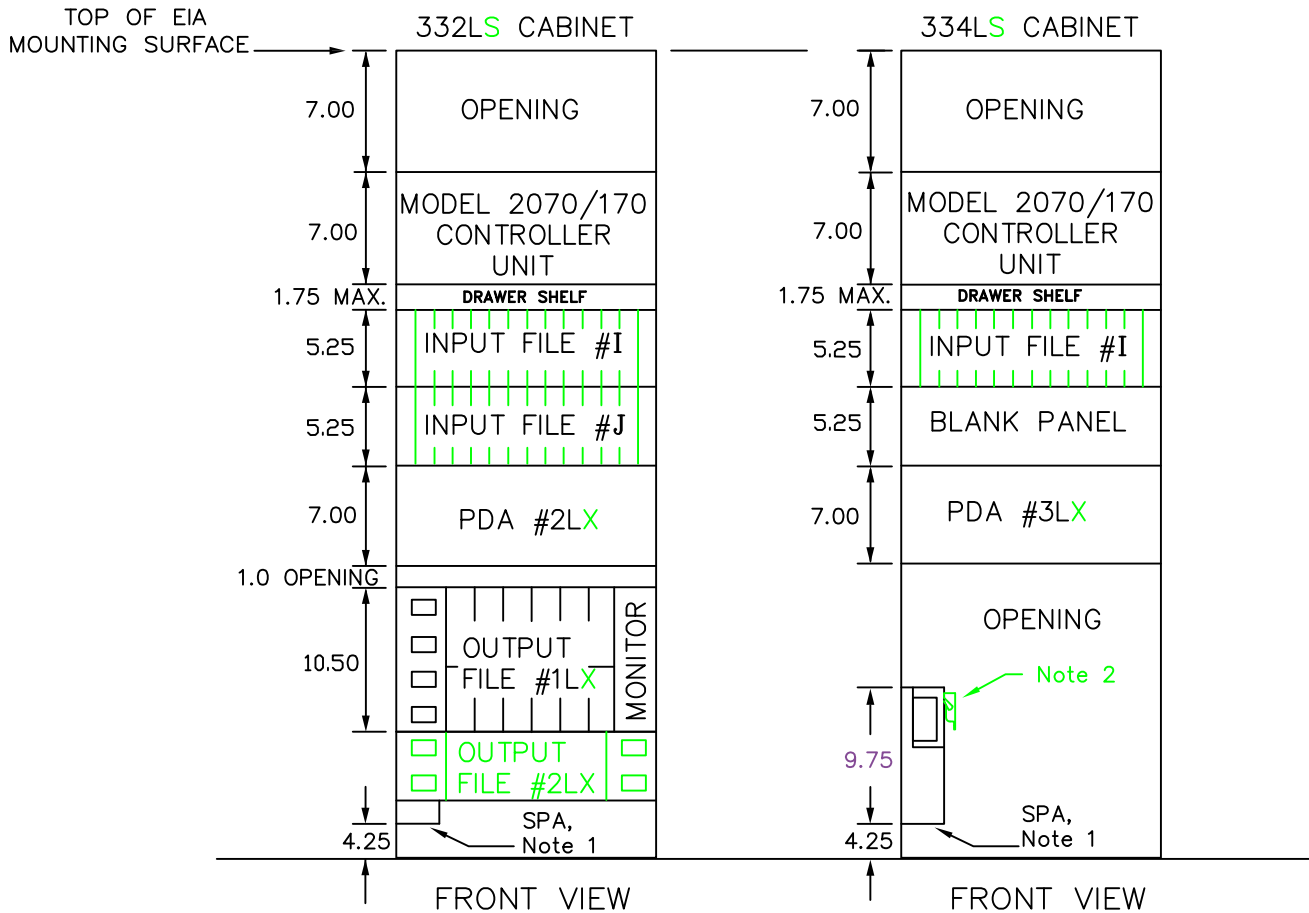


6831 OF ATTACHMENT H



NOTE:

1. SPA shall be bolted on the rail and firmly attached to the Service Panel.
2. For Switch Guard details, see A6-60.
3. All dimensions shown are in inches.

TITLE:	
CABINET EQUIPMENT MOUNTING DETAILS	
SHEET 1 OF 3	
	NO SCALE
TEES 2020	A6-5